

Digital Transfer



## Industrial High Quality Dye Sub Printer

The robust & industrial ValueJet 1948WX (1910 mm – 75.19”) dye sublimation printer will be a top choice for production oriented customers and businesses looking for a high quality volume printer for intensive use.

Ideal for established businesses looking for a high volume production printer, the compact & surprisingly user-friendly ValueJet 1948WX is suited for your high-end roll-to-roll sublimation needs. The printer will deliver a top speed up to 195 m<sup>2</sup>/h.

The VJ-1948WX model features 4 variable drop 8-channel print heads mounted in a staggered configuration, allowing a complete range of output resolutions between 360 x 360 dpi and 1440 x 1440 dpi.

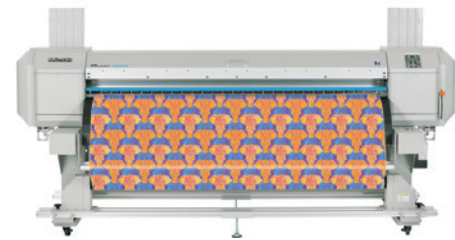
## Product Highlights

- Transfer sublimation printing up to 1910 mm (75.19”)
- Typical production speeds between 47 & 125 m<sup>2</sup>/h
- Staggered head setup with 4 latest generation 1440 nozzle print heads
- Incorporated heaters to remove moisture from the output
- Pressure rollers with integrated disable function
- Minimum waste - individual head cleaning
- Environmentally friendly printing

## Application Possibilities

Grow your business with high volume dye sub applications such as high quality sportswear, in-store & personalised home textile decoration and deco fabrics, fashion, soft signage, textile banners, sports equipment and solid object decoration (ceramic, metal, wood).





## 1910 mm - 75" Dye Sublimation Printer

### Technical Key Specifications

Print Technology	Drop-on-demand Micro Piezo Inkjet Technology
Print Heads	4 (staggered setup)
Nozzle Configuration	180 nozzles x 8 lines / head
Drop Mass Range (pl)	7.43- 33.92
Head Heights	Low: 1.5 mm / Middle: 2.5 mm / High: 4.0 mm

### Media Specifications

Max. Media Width	1910 mm (75,19")
Max. Print Width	1900 mm (74,80")
Max. Media Thickness	0.3 / 1.3 / 2.8 mm *
Media Measurements *	Ø 150 mm / 2" & 3" / 30 kg

\* : Max. media thickness is specified per head height

\* : Standard motorised unwinding / winding system

### Ink & Colour (Channel) Specifications

Ink Type	DS2-series Water-based Universal Transfer Sublimation inks or dedicated sublimation transfer ink chemistry
Ink Volume	1000 ml bottle
Typical Ink Consumption	< 5ml/m <sup>2</sup> on transfer paper
Ink Colours	CMYK (configurable up to 8 colours)
UV durability	3 to 6 months outdoor (DS2)
Light fastness - ISO 105-B02(*)	C (5-6) / M (6-7) / Y (6-7) / K (6)
Washing fastness - ISO 105-C02(*)	C (4-5) / M (4-5) / Y (4-5) / K (4-5)
Perspiration fastness - ISO 105-E02(*)	C (4-5) / M (5) / Y (4-5) / K (4-5)

\* : Score Ranges (min-max): Light 1-8 / Washing 1-5 / Perspiration (1-5)

### Performance

Super Fine	720 x 1080 – Uni – 12 Scan	11.5 m <sup>2</sup> /h
Fine	720 x 1080 – Bi* – 12 Scan	23 m <sup>2</sup> /h
High Quality	360 x 1080 – Bi* – 6 Scan	47 m <sup>2</sup> /h
Quality Production	720 x 720 – Bi* – 4 Scan	67 m <sup>2</sup> /h
Production	360 x 1080 – Bi* – 3 Scan	88 m <sup>2</sup> /h
Selected Production	360 x 720 – Bi* – 2 Scan	125 m <sup>2</sup> /h
Max. Speed	360 x 360 – Bi* – 1 Scan	195 m <sup>2</sup> /h

\* : bi : heads print as the carriage moves in both directions

### Power Consumption

During Printing Heaters Off	< 600 W
During Printing Heaters On	< 2840 W
Power Supply	AC 100-120 V / AC 200-240 - 60/50 Hz

### Recommended Working Environment

Temperature	22°C - 30 °C with Δt: max. 2 °C/h
Humidity	40% - 60 % (no condensation) with ΔRH: max. 5% RH/h

### Machine Measurements

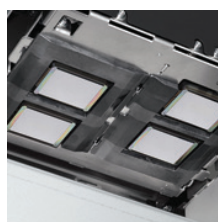
Width x Depth x Height	2983 x 996 x 1261 mm
Weight	201 kg



Extended dual section heater to remove all moisture from the output before take-up/roll-up



Pressure rollers can be easily and individually disabled to cope with media cockling



Dual staggered head setup / head height up to 4 mm

Distributed by

