



Sign & Display



## Compact 24" Wide Desktop Eco Ultra Printer

The VJ-628 is Mutoh's smallest sign & display printer offering a great potential to start-up businesses, small sign makers, department stores and quick print providers. Offering a media width of 630 mm (24"), the compact, user-friendly & cost-effective ValueJet 628 has been developed for a wide array of applications ranging from in-store printing, commercial print, signage and print-to-cut applications.

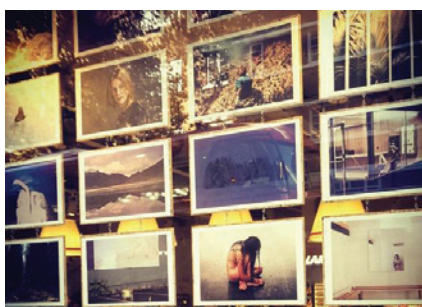
Equipped with a latest generation micro piezo print head, this compact 8-channel desktop printer delivers high quality prints for indoor & outdoor applications.

## Product Highlights

- Powerful 8-channel desktop printer
- Latest generation piezo print head technology on board
- Impeccable print quality every time with Mutoh Intelligent Interweaving print technology (i<sup>2</sup>)
- Durable graphics with Mutoh Eco Ultra inks
- Production speed range from 3 to 12.5 m<sup>2</sup>/h

## Application Possibilities

Designed for small-lot on-demand production, the VJ-628 is suited for a wide variety of outdoor and indoor prints : long-term outdoor posters, stickers & labels, signs and banners, apparel decoration, backlit signage, POS displays, vehicle & window graphics, photo prints, fine art reproduction, etc.





## Compact 24" Sign & Display Printer

### Technical Key Specifications

Print Technology	Drop-on-demand Micro Piezo Inkjet Technology
Print Heads	1 (8 colour channels)
Nozzle Configuration	180 nozzles x 8 lines
Drop Mass Range (pl)	3.5 to 35.2
Head Heights	Low: 1.2 mm / High: 2.5 mm

### Media Specifications

Max. Media Width	630 mm (24,80")
Max. Print Width	620 mm (24,40")
Max. Media Thickness	0.3 / 1.3 mm *
* : Max. media thickness is specified per head height	
Media Measurements *	Ø 150 mm / 2" & 3" / 9 kg
* : Standard non-motorised roll-off system	
Media Drying System	3 heater zones: pre-heater, platen heater & after heater. Single control : off, 30-45 °C
Sheet Off Function	Automatic sheet off system integrated

### Performance

High Quality (720 x 1080)	3.0 m <sup>2</sup> /h
Quality (720 x 720)	4.6 m <sup>2</sup> /h
Quality Production (720 x 1080)	5.9 m <sup>2</sup> /h
Production (720 x 720)	9.0 m <sup>2</sup> /h
Speed Production (720 x 720)	12.5 m <sup>2</sup> /h
Billboard (360 x 720)	16.0 m <sup>2</sup> /h

\* : All speeds indicated for 4 colour setup. Full Width. Intelligent Interweaving active.

### Ink Specifications

Ink Type	Eco Ultra
Ink Volume	220 ml cassette / 1000 ml bag *
* : 1L pack requires optional adapter	
Ink Colours	CMYK
Ink Consumption *	8 ml / m <sup>2</sup>
* : Average ink consumption at @ 720 dpi - coverage of 67 %	
UV durability—without lamination	3 years outdoor *
* : For heavy duty applications where mechanical stress is involved, lamination is required. Stabilisation is required prior to lamination.	

### Power Consumption

During Printing	≤ 830 W
Power Supply	AC 100-120 V / AC 200-240 - 60/50 Hz - ≤ 6.5 A / ≤ 3.5 A

### Recommended Working Environment

Temperature	20°C - 32 °C with Δt: max. 2 °C/h
Humidity	40% - 60% (no condensation) with ΔRH: max. 5% RH/h

### Machine Measurements

Width x Depth x Height	1190 x 437.5 x 365.6 mm (desktop) 1190 x 590 x 1165.6 mm (+ optional stand)
Weight Desktop / Stand	31.8 kg / 40.5 kg

Distributed by

